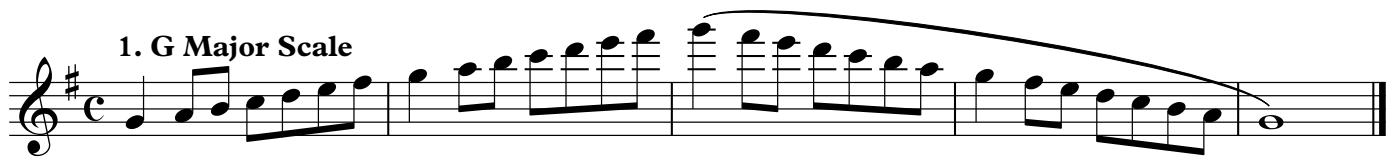


Flute

Region 9 ATSSB Middle School Scales

1. G Major Scale



Musical notation for the G Major Scale in treble clef, common time. The scale is written in a single line, starting on G4 and ending on G5. It consists of two phrases: an ascending eighth-note scale and a descending eighth-note scale, both slurred together.

2. C Major Scale




Musical notation for the C Major Scale in treble clef, common time. The scale is written in a single line, starting on C4 and ending on C5. It consists of two phrases: an ascending eighth-note scale and a descending eighth-note scale, both slurred together.

3. F Major Scale



Musical notation for the F Major Scale in treble clef, common time. The scale is written in a single line, starting on F4 and ending on F5. It consists of two phrases: an ascending eighth-note scale and a descending eighth-note scale, both slurred together.

4. B \flat Major Scale



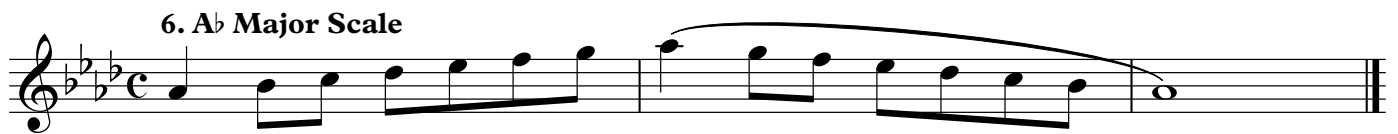
Musical notation for the B-flat Major Scale in treble clef, common time. The scale is written in a single line, starting on B \flat 4 and ending on B \flat 5. It consists of two phrases: an ascending eighth-note scale and a descending eighth-note scale, both slurred together.

5. E \flat Major Scale



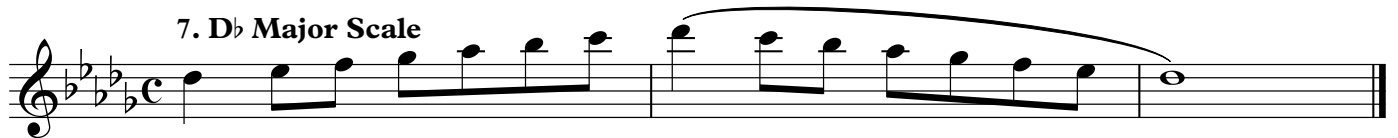
Musical notation for the E-flat Major Scale in treble clef, common time. The scale is written in a single line, starting on E \flat 4 and ending on E \flat 5. It consists of two phrases: an ascending eighth-note scale and a descending eighth-note scale, both slurred together.

6. A \flat Major Scale



Musical notation for the A-flat Major Scale in treble clef, common time. The scale is written in a single line, starting on A \flat 4 and ending on A \flat 5. It consists of two phrases: an ascending eighth-note scale and a descending eighth-note scale, both slurred together.

7. D \flat Major Scale

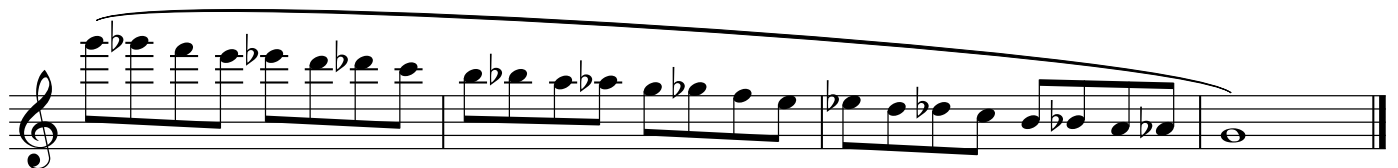


Musical notation for the D-flat Major Scale in treble clef, common time. The scale is written in a single line, starting on D \flat 4 and ending on D \flat 5. It consists of two phrases: an ascending eighth-note scale and a descending eighth-note scale, both slurred together.

8. Chromatic Scale



Musical notation for the Chromatic Scale in treble clef, common time. The scale is written in a single line, starting on C4 and ending on C5. It consists of two phrases: an ascending chromatic scale and a descending chromatic scale, both slurred together.



Musical notation for the Chromatic Scale in treble clef, common time. The scale is written in a single line, starting on C5 and ending on C4. It consists of two phrases: an ascending chromatic scale and a descending chromatic scale, both slurred together.

Oboe

Region 9 ATSSB Middle School Scales

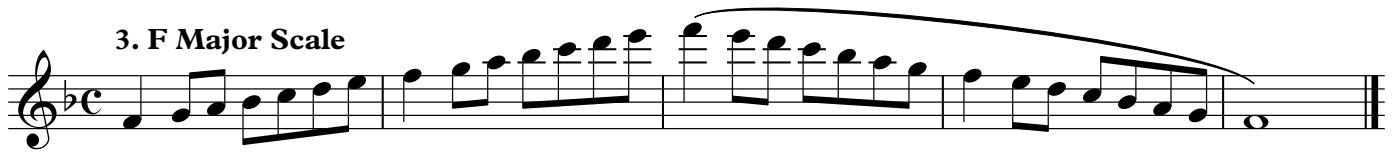
1. G Major Scale



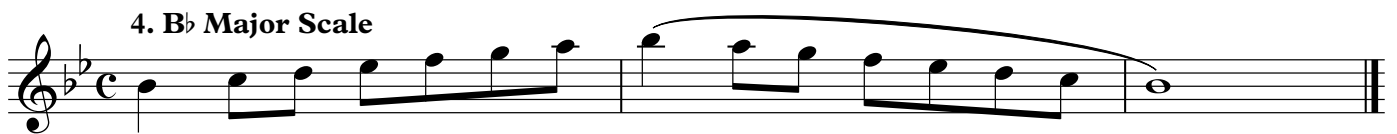
2. C Major Scale



3. F Major Scale



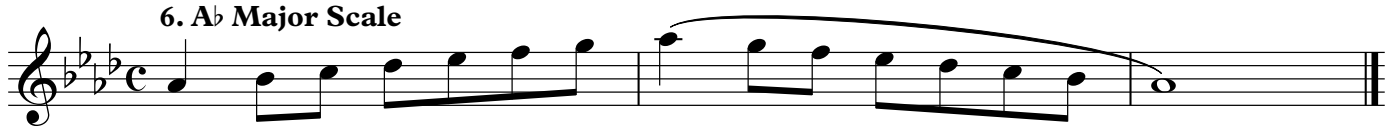
4. Bb Major Scale



5. Eb Major Scale



6. Ab Major Scale



7. Db Major Scale



8. Chromatic Scale



Bassoon

Region 9 ATSSB Middle School Scales

1. G Major Scale



2. C Major Scale



3. F Major Scale



4. Bb Major Scale



5. Eb Major Scale



6. Ab Major Scale



7. Db Major Scale



8. Chromatic Scale



Region 9 ATSSB Middle School Scales

Clarinet in B \flat

1. Concert G (Written A) Major Scale



2. Concert C (Written D) Major Scale



3. Concert F (Written G) Major Scale



4. Concert B \flat (Written C) Major Scale



5. Concert E \flat (Written F) Major Scale



6. Concert A \flat (Written B \flat) Major Scale



7. Concert D \flat (Written E \flat) Major Scale



8. Chromatic Scale



Region 9 ATSSB Middle School Scales

Alto/Contralto Clarinet in E \flat

1. Concert G (Written E) Major Scale

Musical notation for the Concert G (Written E) Major Scale. The key signature has three sharps (F#, C#, G#) and the time signature is common time (C). The scale is written on a treble clef staff, starting on E4 and ending on E5. The notation includes a slur over the entire scale and a final double bar line.

2. Concert C (Written A) Major Scale

Musical notation for the Concert C (Written A) Major Scale. The key signature has three sharps (F#, C#, G#) and the time signature is common time (C). The scale is written on a treble clef staff, starting on A4 and ending on A5. The notation includes a slur over the entire scale and a final double bar line.

3. Concert F (Written D) Major Scale

Musical notation for the Concert F (Written D) Major Scale. The key signature has two sharps (F#, C#) and the time signature is common time (C). The scale is written on a treble clef staff, starting on D4 and ending on D5. The notation includes a slur over the entire scale and a final double bar line.

4. Concert B \flat (Written G) Major Scale

Musical notation for the Concert B \flat (Written G) Major Scale. The key signature has one sharp (F#) and the time signature is common time (C). The scale is written on a treble clef staff, starting on G4 and ending on G5. The notation includes a slur over the entire scale and a final double bar line.

5. Concert E \flat (Written C) Major Scale

Musical notation for the Concert E \flat (Written C) Major Scale. The key signature has no sharps or flats and the time signature is common time (C). The scale is written on a treble clef staff, starting on C4 and ending on C5. The notation includes a slur over the entire scale and a final double bar line.

6. Concert A \flat (Written F) Major Scale

Musical notation for the Concert A \flat (Written F) Major Scale. The key signature has two flats (B \flat , E \flat) and the time signature is common time (C). The scale is written on a treble clef staff, starting on F4 and ending on F5. The notation includes a slur over the entire scale and a final double bar line.

7. Concert D \flat (Written B \flat) Major Scale

Musical notation for the Concert D \flat (Written B \flat) Major Scale. The key signature has three flats (B \flat , E \flat , A \flat) and the time signature is common time (C). The scale is written on a treble clef staff, starting on B \flat 4 and ending on B \flat 5. The notation includes a slur over the entire scale and a final double bar line.

8. Chromatic Scale

Musical notation for the Chromatic Scale (ascending). The key signature has no sharps or flats and the time signature is common time (C). The scale is written on a treble clef staff, starting on C4 and ending on C5. The notation includes a slur over the entire scale and a final double bar line.

Musical notation for the Chromatic Scale (descending). The key signature has no sharps or flats and the time signature is common time (C). The scale is written on a treble clef staff, starting on C5 and ending on C4. The notation includes a slur over the entire scale and a final double bar line.

Region 9 ATSSB Middle School Scales

Bass/Contrabass Clarinet in B \flat

1. Concert G (Written A) Major Scale



2. Concert C (Written D) Major Scale



3. Concert F (Written G) Major Scale



4. Concert B \flat (Written C) Major Scale



5. Concert E \flat (Written F) Major Scale



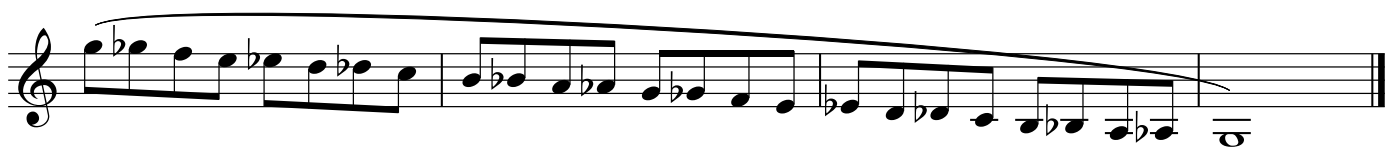
6. Concert A \flat (Written B \flat) Major Scale



7. Concert D \flat (Written E \flat) Major Scale



8. Chromatic Scale



Region 9 ATSSB Middle School Scales

Alto/Baritone Saxophone

1. Concert G (Written E) Major Scale



2. Concert C (Written A) Major Scale



3. Concert F (Written D) Major Scale



4. Concert B \flat (Written G) Major Scale



5. Concert E \flat (Written C) Major Scale



6. Concert A \flat (Written F) Major Scale



7. Concert D \flat (Written B \flat) Major Scale



8. Chromatic Scale



Region 9 ATSSB Middle School Scales

Tenor Saxophone

1. Concert G (Written A) Major Scale



2. Concert C (Written D) Major Scale



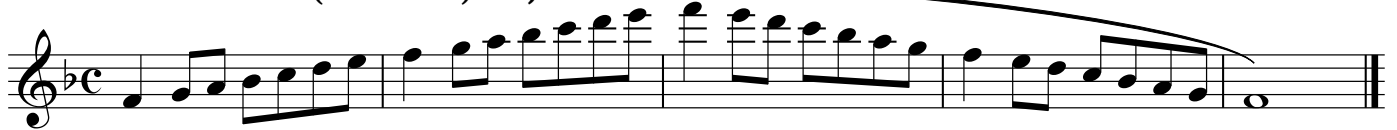
3. Concert F (Written G) Major Scale



4. Concert B \flat (Written C) Major Scale



5. Concert E \flat (Written F) Major Scale



6. Concert A \flat (Written B \flat) Major Scale



7. Concert D \flat (Written E \flat) Major Scale



8. Chromatic Scale



Region 9 ATSSB Middle School Scales

Trumpet in B \flat

1. Concert G (Written A) Major Scale



2. Concert C (Written D) Major Scale



3. Concert F (Written G) Major Scale



4. Concert B \flat (Written C) Major Scale



5. Concert E \flat (Written F) Major Scale



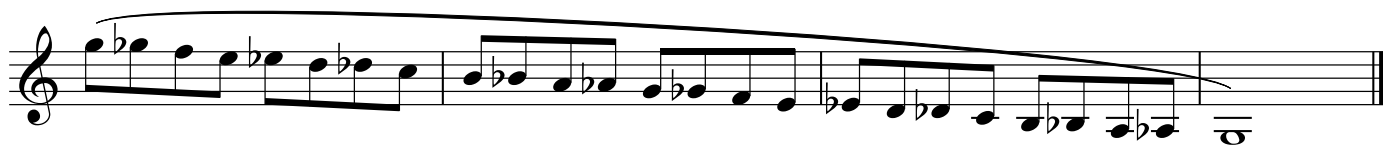
6. Concert A \flat (Written B \flat) Major Scale



7. Concert D \flat (Written E \flat) Major Scale



8. Chromatic Scale



Horn in F Region 9 ATSSB Middle School Scales

1. Concert G (Written D) Major Scale



2. Concert C (Written G) Major Scale



3. Concert F (Written C) Major Scale



4. Concert B \flat (Written F) Major Scale



5. Concert E \flat (Written B \flat) Major Scale



6. Concert A \flat (Written E \flat) Major Scale



7. Concert D \flat (Written A \flat) Major Scale



8. Chromatic Scale



Trombone Region 9 ATSSB Middle School Scales

1. G Major Scale



2. C Major Scale



3. F Major Scale



4. Bb Major Scale



5. Eb Major Scale



6. Ab Major Scale



7. Db Major Scale



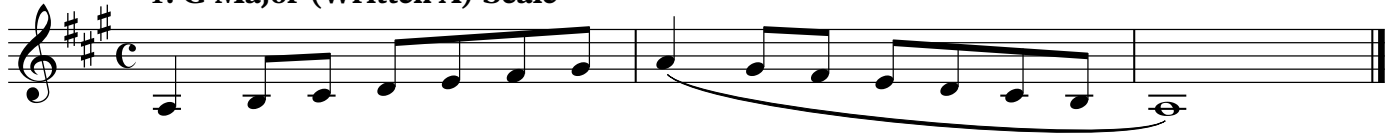
8. Chromatic Scale



Region 9 ATSSB Middle School Scales

Euphonium (Treble Clef)

1. G Major (Written A) Scale



2. C Major (Written D) Scale



3. F Major (Written G) Scale



4. Bb Major (Written C) Scale



5. Eb Major (Written F) Scale



6. Ab Major (Written Bb) Scale



7. Db Major (Written Eb) Scale



8. Chromatic Scale



Region 9 ATSSB Middle School Scales

Euphonium (Bass Clef)

1. G Major Scale



2. C Major Scale



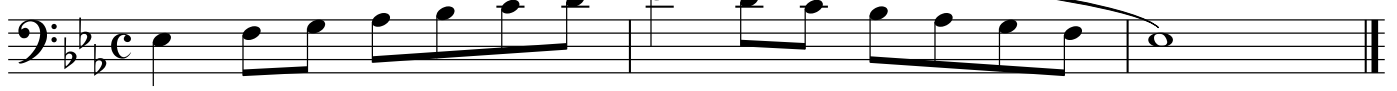
3. F Major Scale



4. Bb Major Scale



5. Eb Major Scale



6. Ab Major Scale



7. Db Major Scale



8. Chromatic Scale



Tuba

Region 9 ATSSB Middle School Scales

1. G Major Scale

Musical notation for the G Major Scale in bass clef, common time. The scale is written in two lines: the first line contains the ascending scale (G2, A2, B2, C3, D3, E3, F#3, G3), and the second line contains the descending scale (F#3, E3, D3, C3, B2, A2, G2). A slur covers the entire scale, and a fermata is placed over the final G2 note.

2. C Major Scale

Musical notation for the C Major Scale in bass clef, common time. The scale is written in two lines: the first line contains the ascending scale (C2, D2, E2, F2, G2, A2, B2, C3), and the second line contains the descending scale (B2, A2, G2, F2, E2, D2, C2). A slur covers the entire scale, and a fermata is placed over the final C2 note.

3. F Major Scale

Musical notation for the F Major Scale in bass clef, common time. The scale is written in two lines: the first line contains the ascending scale (F2, G2, A2, Bb2, C3, D3, E3, F3), and the second line contains the descending scale (E3, D3, C3, Bb2, A2, G2, F2). A slur covers the entire scale, and a fermata is placed over the final F2 note.

4. Bb Major Scale

Musical notation for the Bb Major Scale in bass clef, common time. The scale is written in two lines: the first line contains the ascending scale (Bb2, C3, D3, E3, F3, G3, Ab3, Bb3), and the second line contains the descending scale (Ab3, G3, F3, E3, D3, C3, Bb2). A slur covers the entire scale, and a fermata is placed over the final Bb2 note.

5. Eb Major Scale

Musical notation for the Eb Major Scale in bass clef, common time. The scale is written in two lines: the first line contains the ascending scale (Eb2, F2, G2, Ab2, Bb2, C3, D3, Eb3), and the second line contains the descending scale (Eb3, D3, C3, Bb2, Ab2, G2, F2). A slur covers the entire scale, and a fermata is placed over the final Eb2 note.

6. Ab Major Scale

Musical notation for the Ab Major Scale in bass clef, common time. The scale is written in two lines: the first line contains the ascending scale (Ab2, Bb2, C3, D3, Eb3, F3, G3, Ab3), and the second line contains the descending scale (Ab3, G3, F3, Eb3, D3, C3, Bb2). A slur covers the entire scale, and a fermata is placed over the final Ab2 note.

7. Db Major Scale

Musical notation for the Db Major Scale in bass clef, common time. The scale is written in two lines: the first line contains the ascending scale (Db2, Eb2, F2, G2, Ab2, Bb2, C3, Db3), and the second line contains the descending scale (Db3, C3, Bb2, Ab2, G2, F2, Eb2). A slur covers the entire scale, and a fermata is placed over the final Db2 note.

8. Chromatic Scale

Musical notation for the ascending Chromatic Scale in bass clef, common time. The scale is written on a single line, starting on G2 and ascending chromatically to G3. A slur covers the entire scale, and a fermata is placed over the final G3 note.

Musical notation for the descending Chromatic Scale in bass clef, common time. The scale is written on a single line, starting on G3 and descending chromatically to G2. A slur covers the entire scale, and a fermata is placed over the final G2 note.